



Let's create

With an aim to uplift the living standard of people throughout Rajasthan, the strong foundation of 'GKB GROUP' was laid by a group of technocrats. Pioneering realms since then, the name stands notable in the Real Estate sector of Rajasthan.

The group firmly believes in inspiring a redefined living and re-incarnating from the old to a contemporary face along with perfectly rendered transition plans.

Being committed to an unparalleled artistic finesse with each foundation constructed, 'GKB GROUP' is sure to provide its customers a lot more spectacular wonders in the near future.

GOVIND KRIPA REAL HOME (P) LTD.

Corporate Office:

205-206, Prakashdeep Complex,
Near Mayank, Station Road, Jaipur- 302006

T: +91 141 322 5844

M: +91 93515 83836- 37, 93515 83833

E: info@gkbgroup.org, theurbanite@gkbgroup.org

W: www.gkbgroup.org

GROUP ADVISOR:

AND advisors

ASHVINI KHATREE
(Concept: Sales & Marketing)

ARCHITECT:

imagine
architecture

CONSULTANTS ON BOARD:

Superstructures - PMC

Sanrachna - Structure

Eco Envision Design Studio - Landscape

Navya Design- Interior

M. Thanvi - MEP

Disclaimer: This brochure is not a legal document and just describes the developer's intended conceptual plan. Specifications and details provided are tentative and may change at sole discretion of developer and/ or the architect.

LIVE
VIBRANT
LIVE
URBAN

design & concept : www.nmncdesigns.com



FULLY- FURNISHED STUDIO & 1BHK APARTMENTS/ SUITES
THE PRIME, OMAXE CITY,
JAIPUR- AJMER EXPRESSWAY, JAIPUR

DESIGN PHILOSOPHY

The vibrant, the urban
and convergence of both
is what becomes- The Urbanite

IT'S SPACIOUS, BEFITTING, ENTHRALLING AND SOOTHING

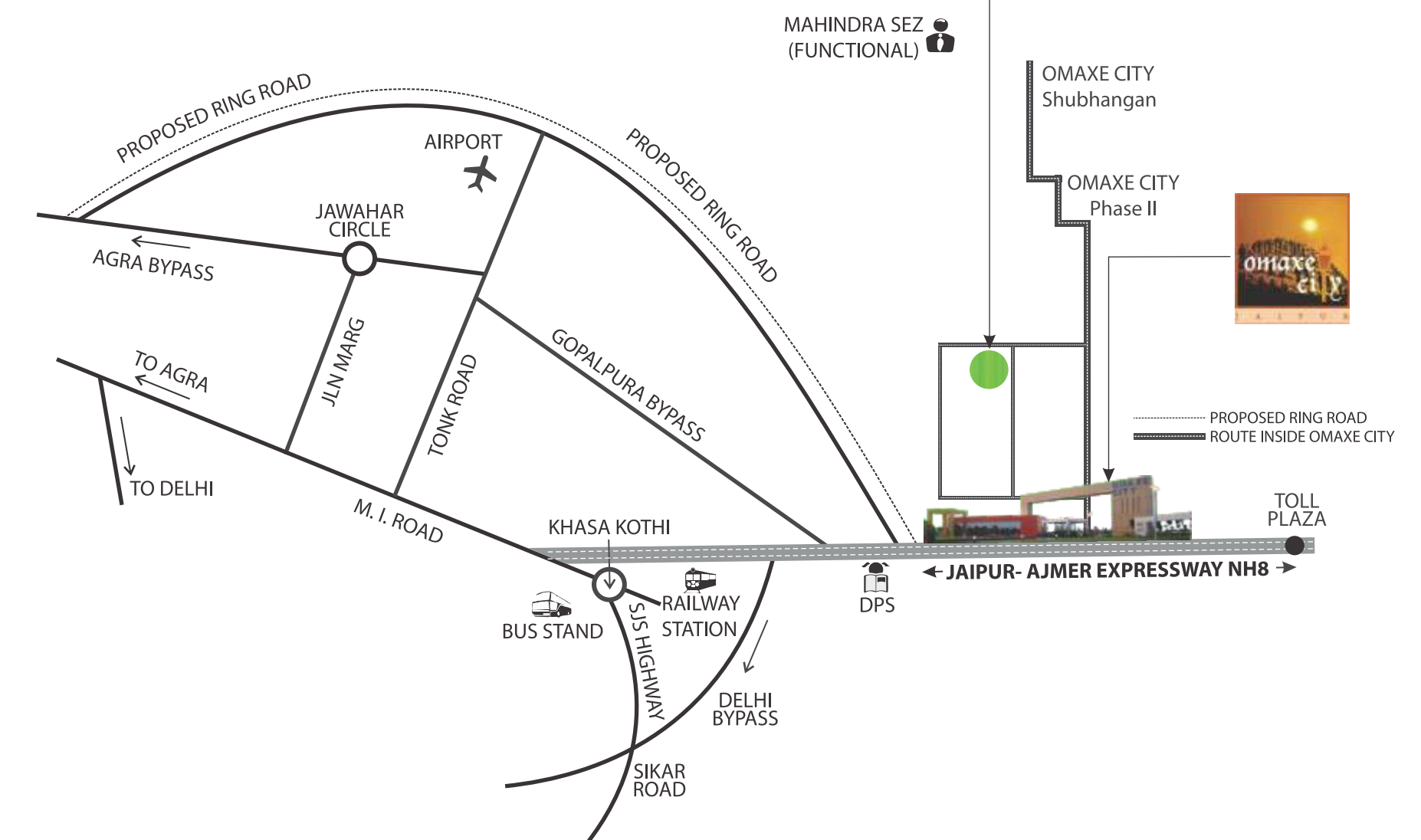
For genres and generations...
it's forever too

LOCATION

Within the prime and plush location of Omaxe City, 'The Urbanite' enjoys being notably located on the Jaipur- Ajmer Expressway. A promising residential location that offers you much more than thought, the residents here get the best of both worlds- a project with all contemporary facilities available and a township that gives you a respectable address along with the common conveniences.

Locational Advantages:

- Situated just at the entrance of Omaxe City in Phase- 1.
- Conveniently accessible through Jaipur- Ajmer Expressway.
- The Urbanite is benefitted by the township facilities of the 500 acres' Omaxe City, with options for education, medical treatment, entertainment, shopping etc.
- Close to multi-speciality operational SEZ, spread over 3000 acres that has several corporate houses like Deutshe Bank, ICICI Bank, SBI Bank, JCB India, Genpact, Infosys and Naggaro Software.
- Finest of the educational institutions in close vicinity like Manipal University, Arya Engineering College, JK Lakshmipat Singhania University, Step By Step International School and DPS.



A PLACE
WHERE I CAN'T RESIST,
FEELING YOUNG AGAIN AND AGAIN;
WHILE STILL BEING MATURE, AS I AM.

I AM THE URBANITE.

Whether it's about enjoying being a bachelor or a matured corporate;
The Urbanite is a perfect fit that fulfills the desire of both.



I SENSE THE CALM
AND BREATHE LIBERTY
BY ROOFTOP INFINITY POOL;
I ENJOY YET ONE MORE COFFEE
AT THE OPEN AIR SUNKEN CAFÉ.

I AM THE URBANITE.

One day, it might be a cup of coffee in the open air Sunken café or the other day a long chat
at the lounge. Whatever it be; but it's good to be happening and restful, all through.



IT'S HERE,
THAT I REACH A DESTINATION;
NO MATTER
WHERE I STARTED FROM.

I AM THE URBANITE.

It's a lifestyled home-stay that fits both your needs and purpose, luxuriously.
So, no hassles to find it anymore. Reside worriless, at the pleasant home here.



I FEEL IT PULSATING,
TO WORK OUT AND PLAY EACH DAY;
WITH SCORES OF FACILITIES
SURROUNDING ME.

I AM THE URBANITE.

With a bunch of amenities and facilities strategically packaged, consider Urbanite as a project that gives the maximum, in this price bracket.



BEING AT A LOCATION LIKE THIS,
I CANNOT THINK ANYTHING APART;
IT'S MY INVESTMENT
WITH EVER FRUITFUL RETURNS.

I AM THE URBANITE.

Plan to invest here for rental purpose or further reap the benefits over a period of time. It's a good deal to cheer up either-ways and being perfectly located plus superbly planned, it's surely the best investment opportunity.





ALLURING IT BECOMES,
STEP-BY-STEP,
AND FROM BOTTOM TILL THE TOP;
IT'S MY HEAVEN
THAT EVERYONE ELSE WOULD ENVY.

I AM THE URBANITE.

With everything so blissfully designed, Urbanite is a project that gives the maximum.
Standing out as a residential pinnacle in the vicinity, consider it a lifestyle you would never feel to resist.



Artistic impression



Artistic impression

BEAUTIFUL LANDSCAPES
& WALKWAY



Artistic impression

OPEN-TO-SKY SUNKEN CAFÉ
& AMPHITHEATRE



Artistic impression

TERRACE GARDEN
WITH POOLSIDE PARTY AREA



Artistic impression

POOLSIDE
PARTY AREA



Artistic impression

INFINITY SWIMMING POOL
(Roof Top)



Actual image

FULLY-FURNISHED STUDIO

LIVING

Sofa Cum Bed | LCD 32" with Cabinet | Split AC | Curtains | Artwork
Tube Light & Fan | Mirror



Actual image

KITCHEN

Modular Kitchen with Hob & Chimney | Refrigerator | Water Purifier | Dining Table with Chairs | Over Head Cabinet
Stainless Steel Sink | Granite Counter Top



Actual image

FULLY-FURNISHED
1 BHK

BEDROOM

Double Bed with Storage | Wardrobes | Split AC | LCD Cabinet | Study Table with Chair | Overhead Book Shelf
Curtains | Artwork | Light & Fan



Actual image

LIVING

Sofa Cum Bed | LCD 32" with Cabinet | Split AC | Curtains | Artwork | Tube Light & Fan | Mirror

KITCHEN

Modular Kitchen with Hob & Chimney | Refrigerator | Water Purifier | Dining Table with Chairs | Over Head Cabinet
Stainless Steel Sink | Granite Counter Top



Artistic impression

AIR-CONDITIONED
LOUNGE



Artistic impression

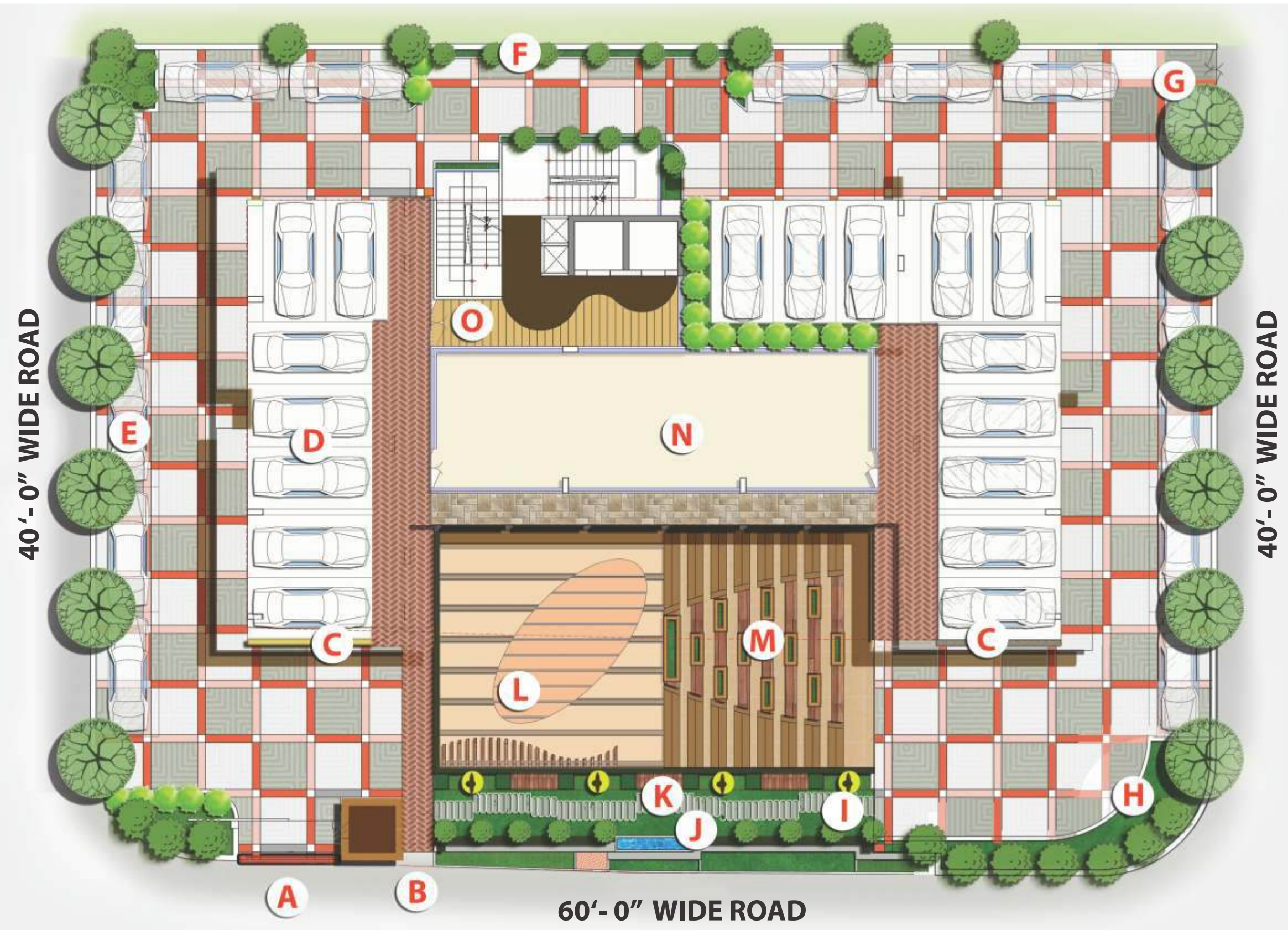
MULTI-PURPOSE HALL
WITH INDOOR GAMES



Artistic impression

FULLY-EQUIPPED
GYMNASIUM

LEGENDS	
A	VEHICULAR ENTRY
B	PEDESTRIAN ENTRY
C	SCREEN WALL
D	STILT PARKING
E	OPEN PARKING
F	DROP OFF WITH FEATURE WALL
G	SERVICE ENTRY
H	AROMATIC PLANTATION
I	SCULPTURE ARCADE
J	WATER FEATURE
K	SEATING
L	SUNKEN COURT WITH CAFE
M	OPEN-AIR THEATRE
N	COMMERCIAL USE
O	LIFT LOBBY

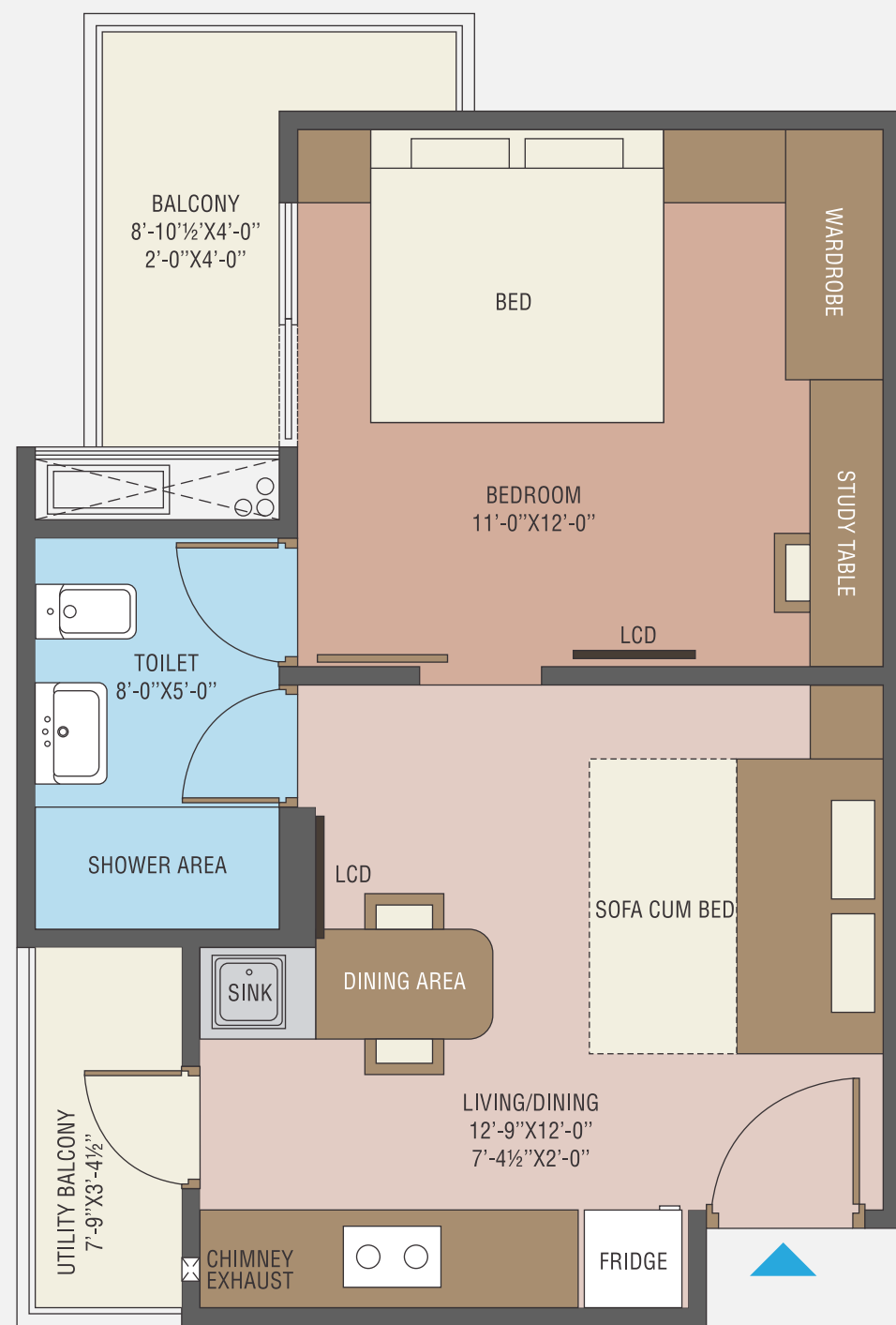


LANDSCAPING PLAN

AREA TABLE		
Flat No.	Flat Type	S.B.U.A (SQ. FT.)
01	1 BHK	580.75
02	1 BHK	602.19
03	Studio	382.86
04	Studio	382.86
05	1 BHK	602.19
06	Studio	382.86
07	1 BHK Suite	765.72
08	Studio	382.86
09	1 BHK	602.19
10	Studio	382.86
11	Studio	382.86
12	1 BHK	602.19



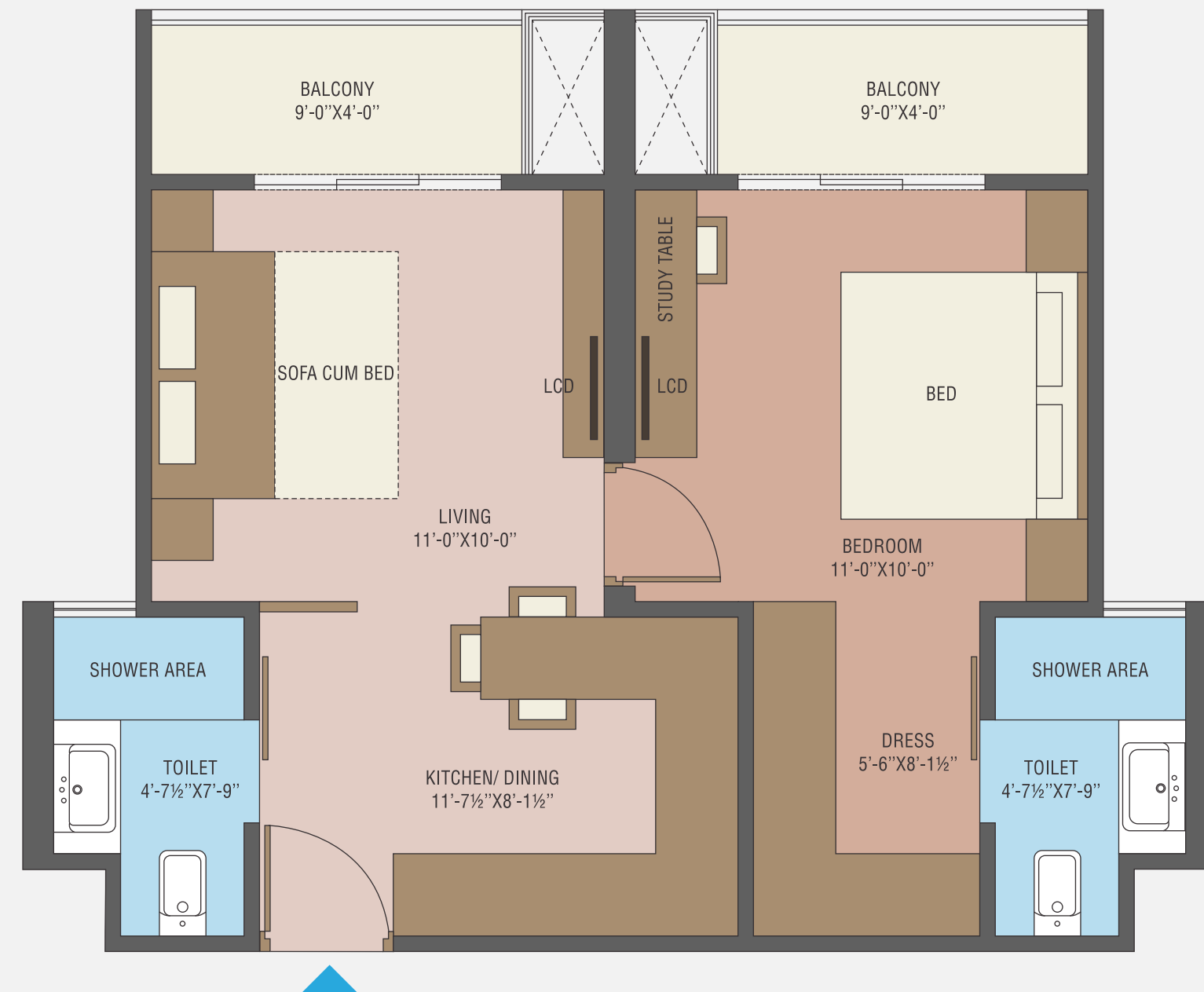
TYPICAL FLOOR
PLAN



UNIT PLAN

1 BHK

SBUA: 602.19 SQ. FT.



UNIT PLAN

LIMITED EDITION PREMIUM 1 BHK SUITE

SBUA: 765.72 SQ. FT.



UNIT PLAN
STUDIO

SBUA: 382.86 SQ. FT.

PROJECT FEATURES

- DEPARTMENTAL STORE
- LAUNDRY & SALOON
- GAS BANK
- 24 HOURS SECURITY (3 TIER SECURITY SYSTEM)
- EPABX & CCTV CAMERA
- WI-FI COMPLIANT BUILDING
- OPEN-TO-SKY SUNKEN CAFÉ & AMPHITHEATRE
- TERRACE GARDEN
- INFINITY SWIMMING POOL (Roof Top)
- POOLSIDE PARTY AREA
- MULTI-PURPOSE HALL WITH INDOOR GAMES
- AIR-CONDITIONED LOUNGE
- FULLY-EQUIPPED GYMNASIUM
- AMPLE PARKING
- BEAUTIFUL LANDSCAPES & WALKWAY
- LUSH GREEN LAWN

SPECIFICATIONS

LIVING/ DINING/ ROOM	
Flooring	: Premium Quality Vitrified Flooring
Skirting	: Premium Quality Vitrified Profile
Walls Finishes	: Plaster with POP & Plastic Emulsion Paint
KITCHEN	
Flooring	: Premium Quality Vitrified Flooring
Skirting	: Premium Quality Vitrified Profile
Walls Finishes	: Plaster with POP & Plastic Emulsion Paint
Counter Top	: Granite
Fitting	: Stainless Steel Sink and CP Fittings
TOILET	
Flooring	: Anti Skid Ceramic Tiles
Wall Finishes	: Premium Ceramic Tiles
Accessories	: Counter Wash Basin, Wall Mounted WC, Glass Partition to demarcate Wet & Dry Area, Geyser & Exhaust Fan
BALCONY	
Flooring & Skirting	: Anti Skid Ceramic Tiles
Hand Rail	: MS Railing with Satin Finish Enamel Paint with Glass
DOORS & WINDOWS	
Doors	: Solid Core Flush Door with Lamination, Mortise Lock
Windows	: Aluminium Powder Coated with Glass
COMMON LOBBY	
Flooring & Skirting	: Premium Quality Vitrified/Anti Skid Tiles
Wall Finishes	: Plaster with POP & Plastic Emulsion Paint
STAIRCASE	
Flooring & Skirting	: Riser & Tread Natural Stone
Hand Rail	: MS Railing with Satin Finish Enamel Paint
PREFFERED MAKES	
C P Fittings	: Jaquar/ Marc/ Kohler/ Equivalent
UPVC/ SWR Pipes	: Supreme/ Finolex/ Equivalent
Floor Tiles	: Kajaria/ Euro/ Johnson/ Varmora/ Equivalent
Wall Tiles	: Euro/ Johnson/ Varmora/ Equivalent
Switch & Sockets	: Crabtree/ Havells/ Anchor/ Equivalent
Wires	: RR Kabel/ Polycab/ Finolex/ Equivalent

PROJECT FEATURES &
SPECIFICATIONS